

# 220 Chip Install Guides

Find below the dedicated installation guides for installing the 220 mods Rapid Fire chips into the Xbox 360, along with the usage videos, digital manuals and help.

Make sure you pick the correct style controller board from the guides below before continuing and read over the entire install procedure before starting. Once finished, double check all connections are identical to the install images including the Red wires and paying close attention to the ABX and Y connections.

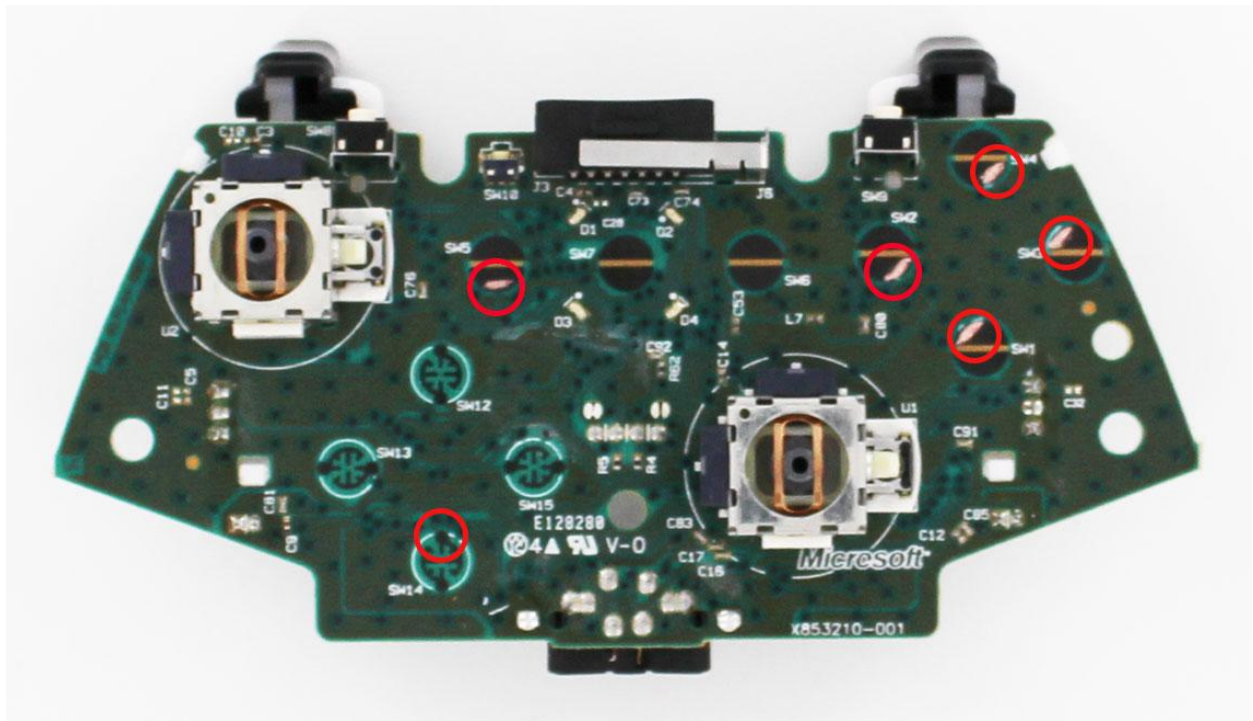
If you are sure you have done this and still having trouble, watch the videos as they explain how the chip works (as it might be working just differently to how you think it would). If you still have trouble email us at for more help

## **NOTE: WARNING**

**When you first boot the mod, LED3 will blink the mods (1..2..3..4..) if you press Button Y it will unlock mod (green LED flash), if you press Button A it will lock mod (orange LED flash). I suggest on first install and power up you just hold down Button Y to activate all mods at first.**

**Unlock sequence available and working, if you accidentally set mods as locked, let me know and I will send password and reset instructions.**

To solder to the black pads of the ABXY / Back buttons etc... You must first scrape off the carbon using a knife like in the install video.



The CG1 is the most common board currently found. It looks very similar to the CG2 board, only with the black Microsoft chip on the back of the controller being at a 45 degree angle, instead of square on. The install for that is identical to the CG2 board, so we only show the images for the CG2.

Solder all red points below, being careful not to short any points like the RB wires to the metal cages or the sync button to the pins either side of the center.

