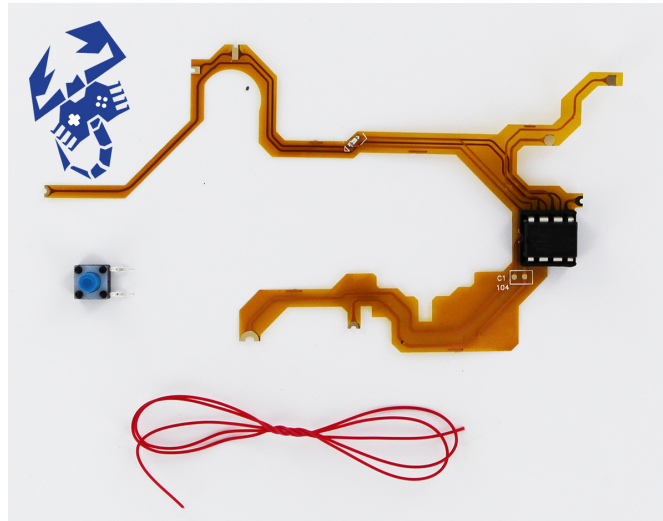
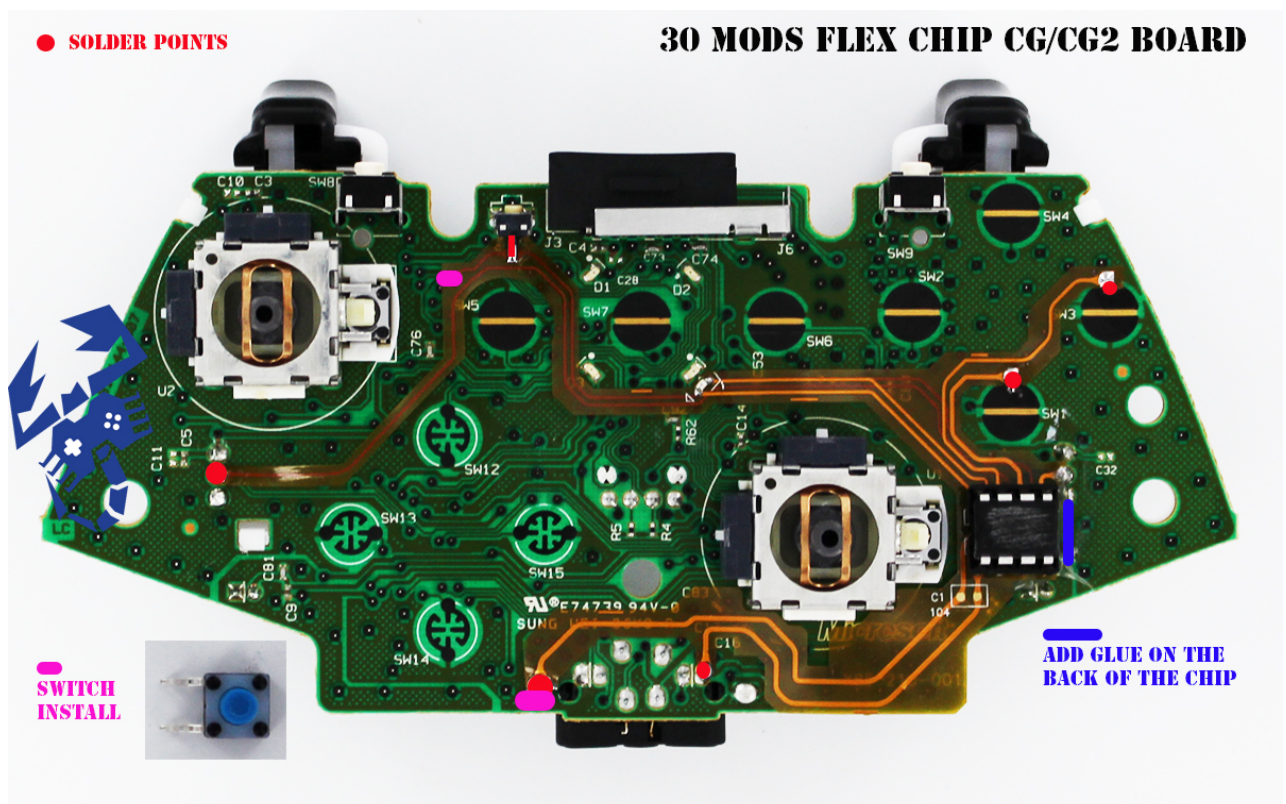


## CG/CG2 Install

Download Instruction at <http://www.ms4r.com/SUPPORT>

### Tools Needed:

- Soldering Iron
- Solder
- Hot Glue Gun
- Xbox360 Wireless Controller (CG or CG2)



**Step 1: Remove (7) T9 Security Torx screws.**



*Note: One of the screws is located beneath the barcode sticker in the battery compartment. This sticker can be removed by scraping at the edge with a razor blade or small screwdriver.*

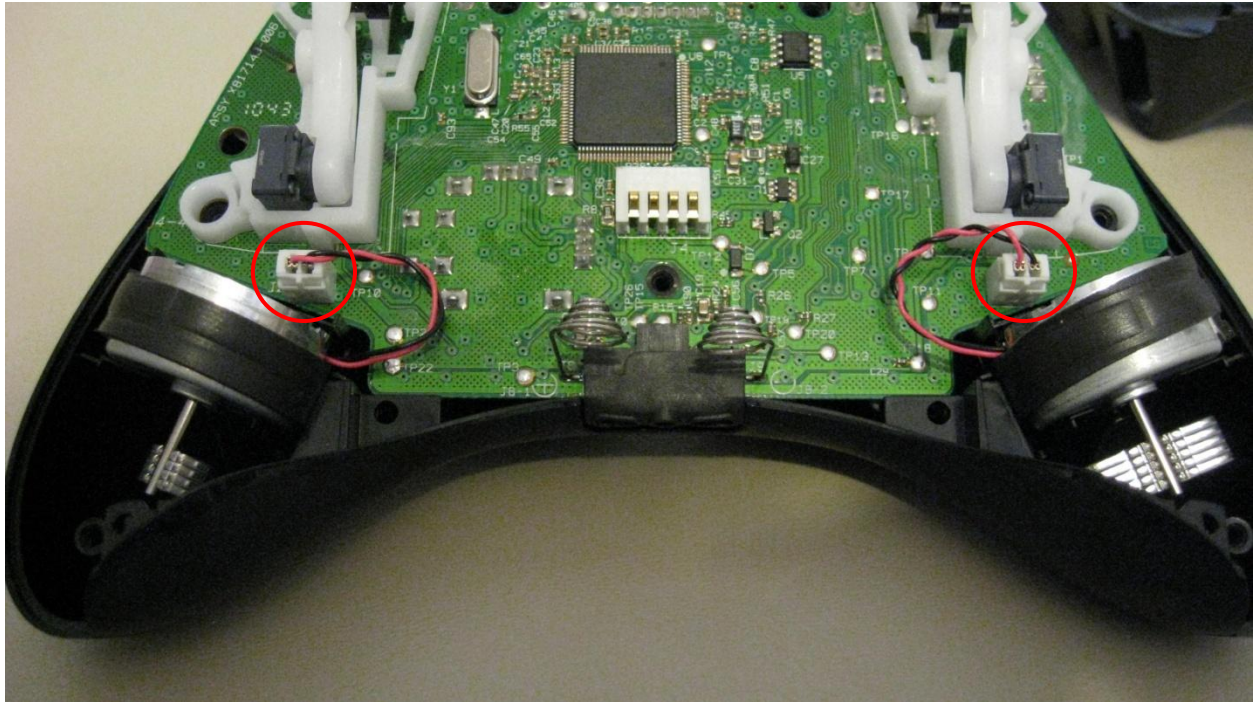
**Step 2: Separate the controller by keeping the joysticks facing the floor and pushing them up.**



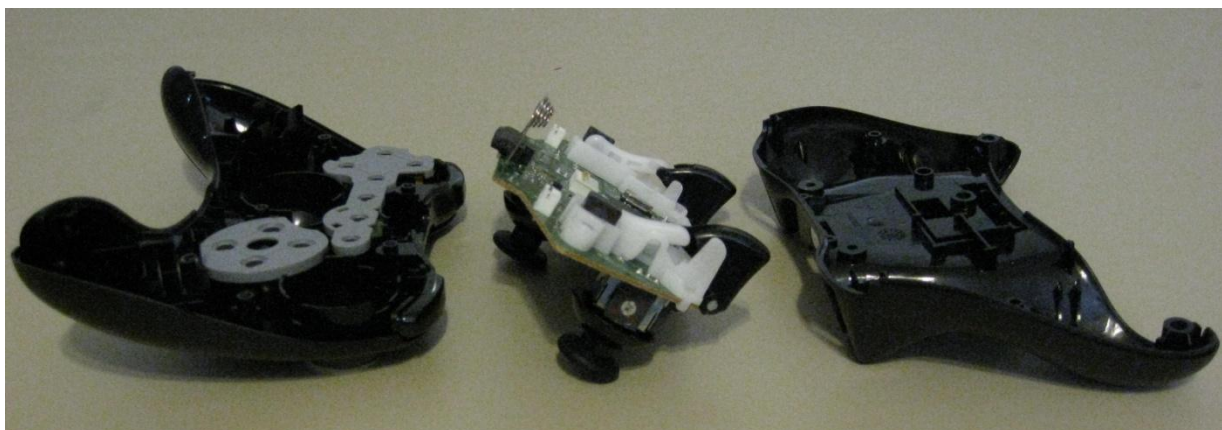
*Note: Keeping the top half upside down will keep the buttons from falling out of the shell.*



**Step 3: Remove rumble motors by pulling on the wires at the connection point to the board.**

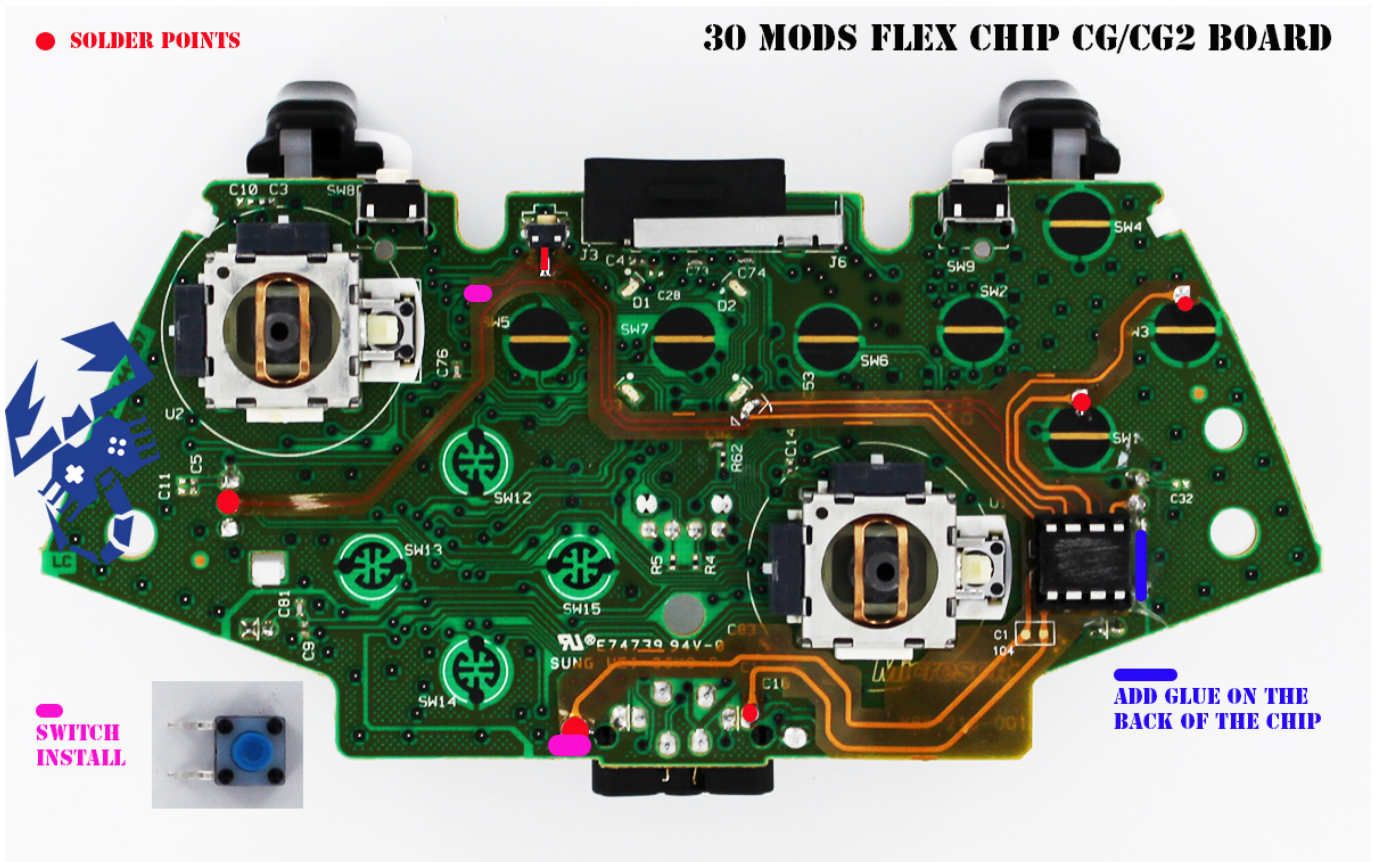


**Step 4: Remove circuit board from controller case by pushing the joysticks through the top half of the case.**



Step 5: Remove joystick covers to keep from accidentally melting them with the soldering iron during the install. Pull joystick covers straight up and away from board to slide off.

The next steps walk you through wiring the mod. Here's a schematic.



Installation Video Go to <http://youtu.be/fwZYgOajufI>